



# Town of Parma

Monroe County, New York

## Agricultural District

### Legend

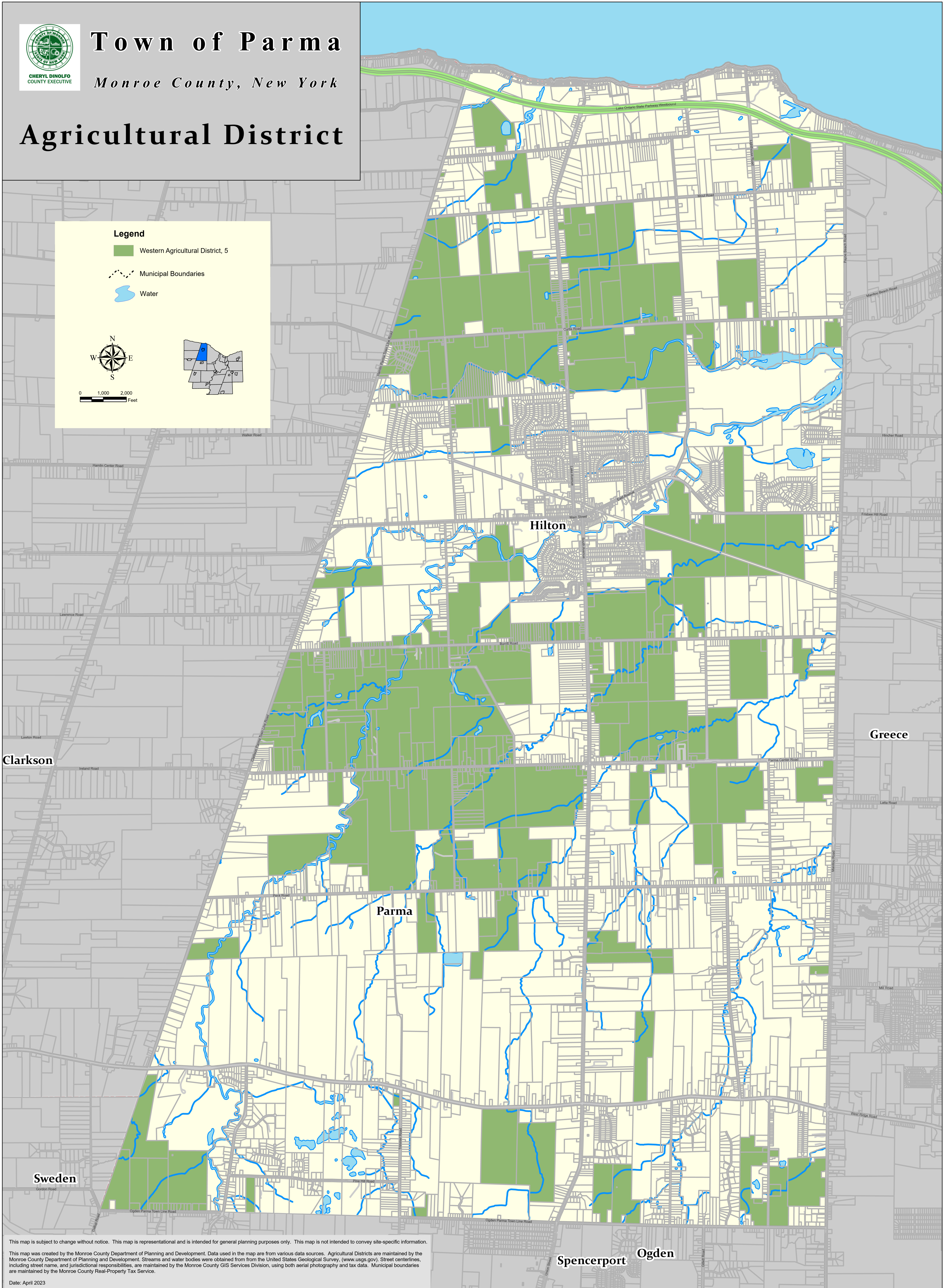
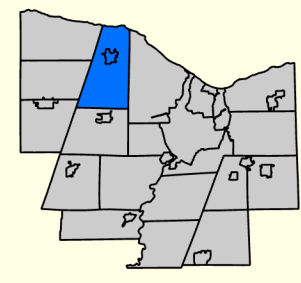
 Western Agricultural District, 5

 Municipal Boundaries

 Water



0 1,000 2,000 Feet



This map is subject to change without notice. This map is representational and is intended for general planning purposes only. This map is not intended to convey site-specific information.

This map was created by the Monroe County Department of Planning and Development. Data used in the map are from various data sources. Agricultural Districts are maintained by the Monroe County Department of Planning and Development. Streams and water bodies were obtained from the United States Geological Survey, ([www.usgs.gov](http://www.usgs.gov)). Street centerlines, including street name, and jurisdictional responsibilities, are maintained by the Monroe County GIS Services Division, using both aerial photography and tax data. Municipal boundaries are maintained by the Monroe County Real-Property Tax Service.

Date: April 2023

Spencerport Ogden